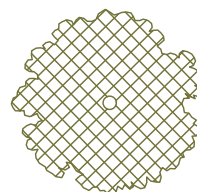


Nieuwe bomen

B1: *Acer Campestre*
B2: *Carpinus Betulus*
B3: *Juglans Regia*
B4: *Crataegus Monogyna*
B5: *Tilia Cordata*
B6: *Sorbus Aucuparia*



Bestaande bomen



Struikgewas

(variatie hoogte 1,5- 4m)

S1: *Euonymus Europaeus*
S2: *Cornus sanguinea*
S3: *Cornus mas*



Haag



Gras



Platines



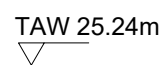
Gestabiliseerd gazon



Waterdoorlatende klinkers



Gestabiliseerd grind



hoogtepeil



grens kavel



snede



noordpijl



standpunt foto



rookmelder



brandkraan

Materialen:

Gevel:

1 xxx

2 xxx

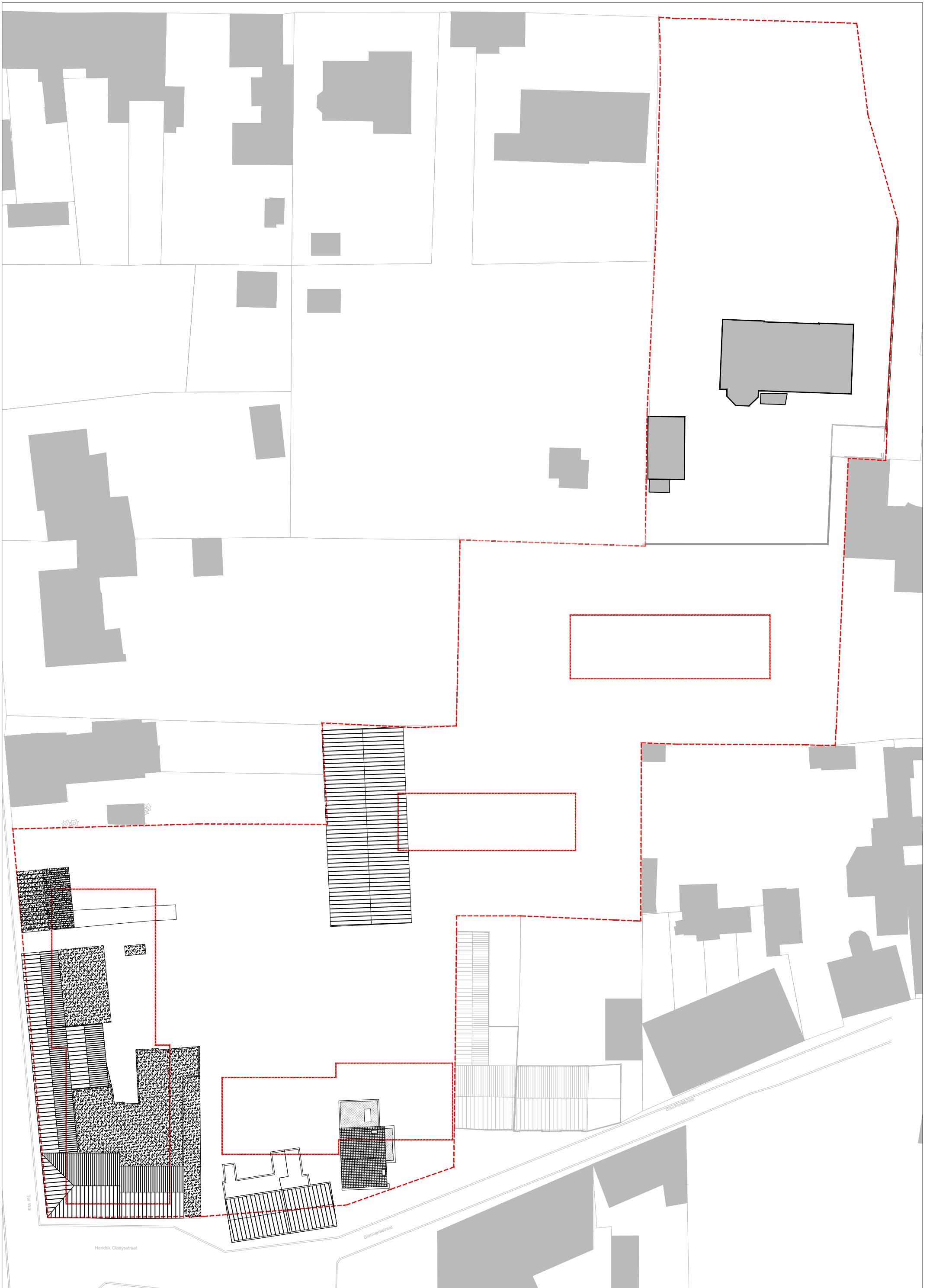
3 xxx

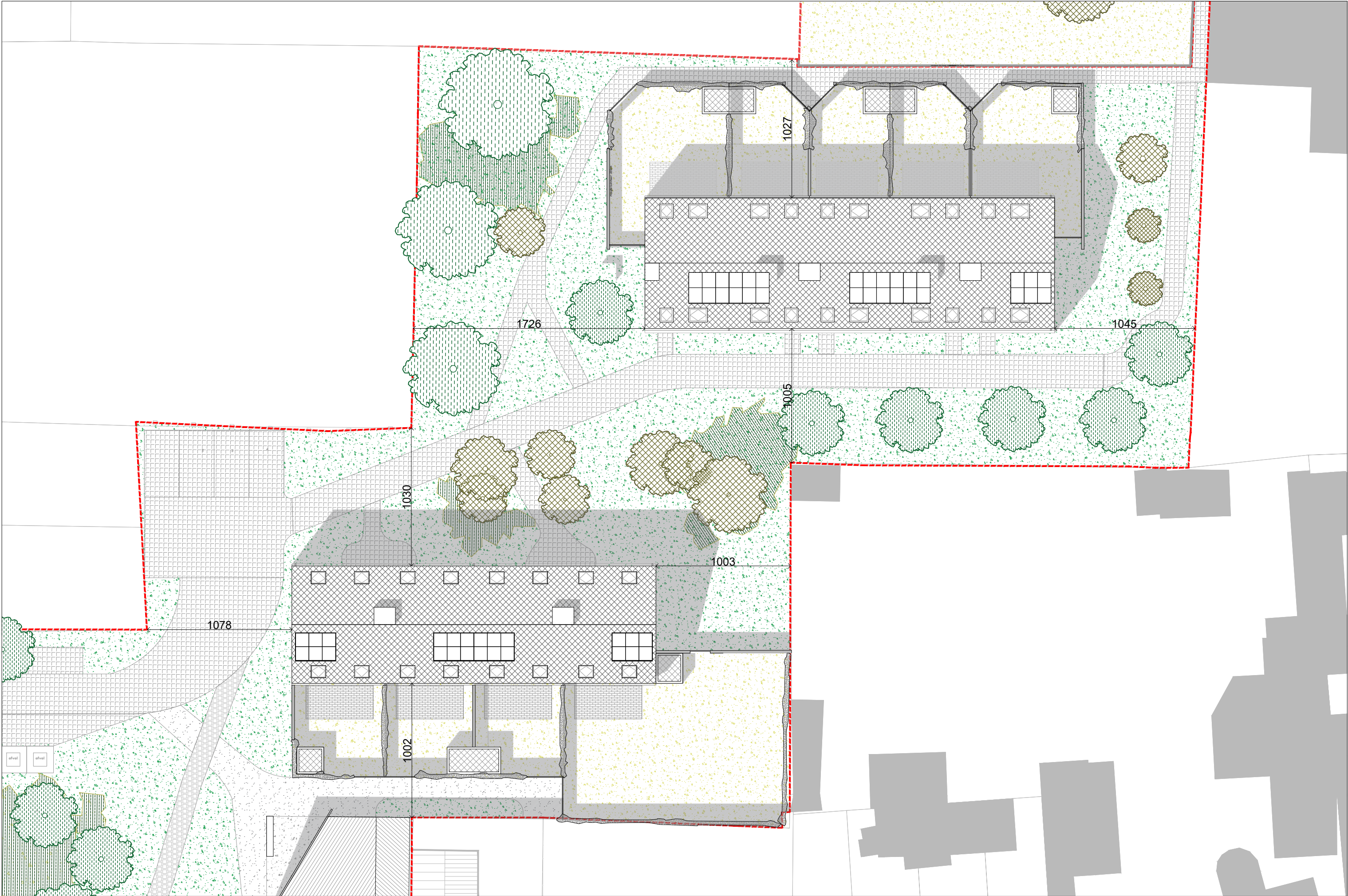
4 xxx

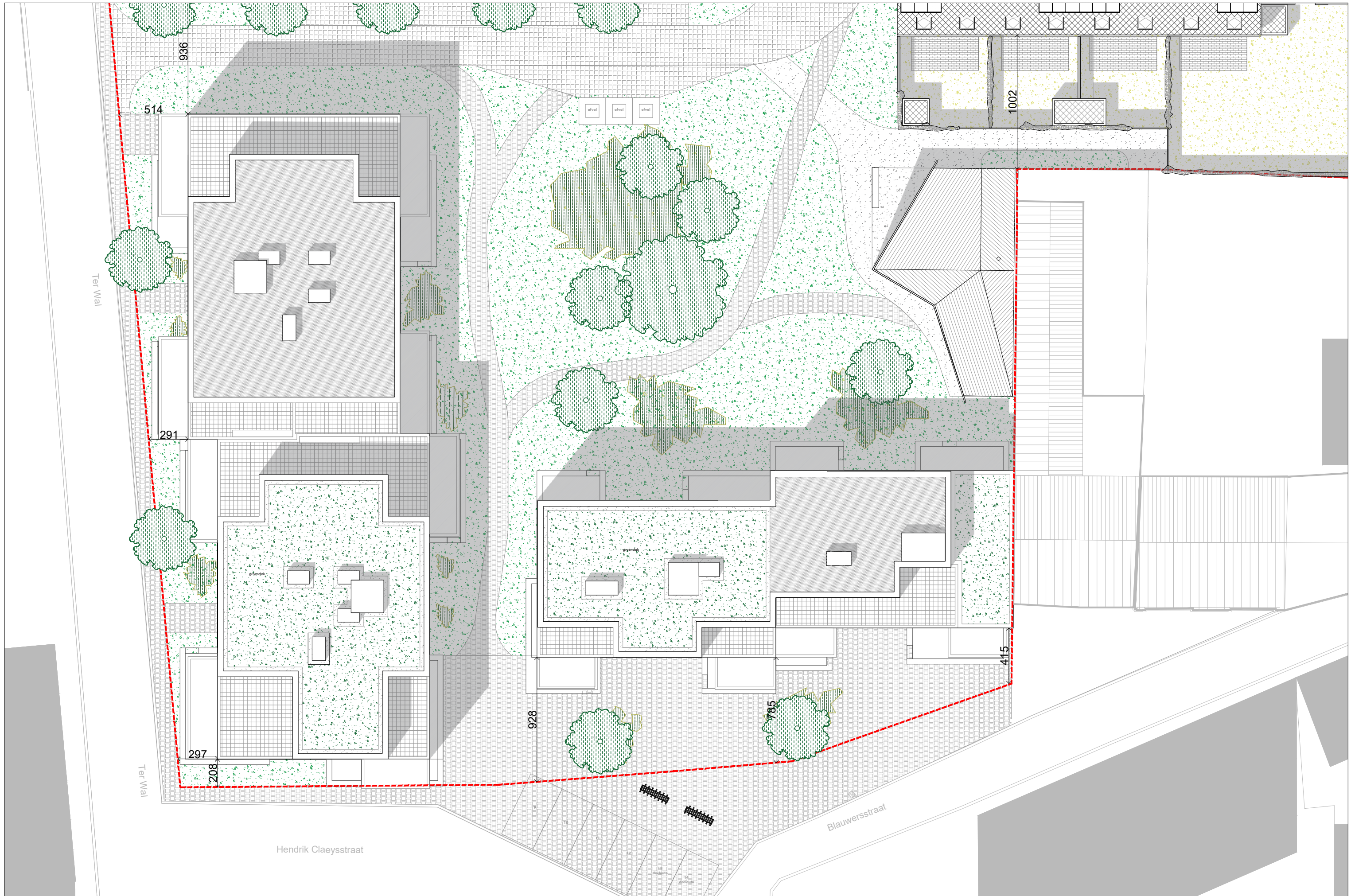
5 xxx

Constructie:

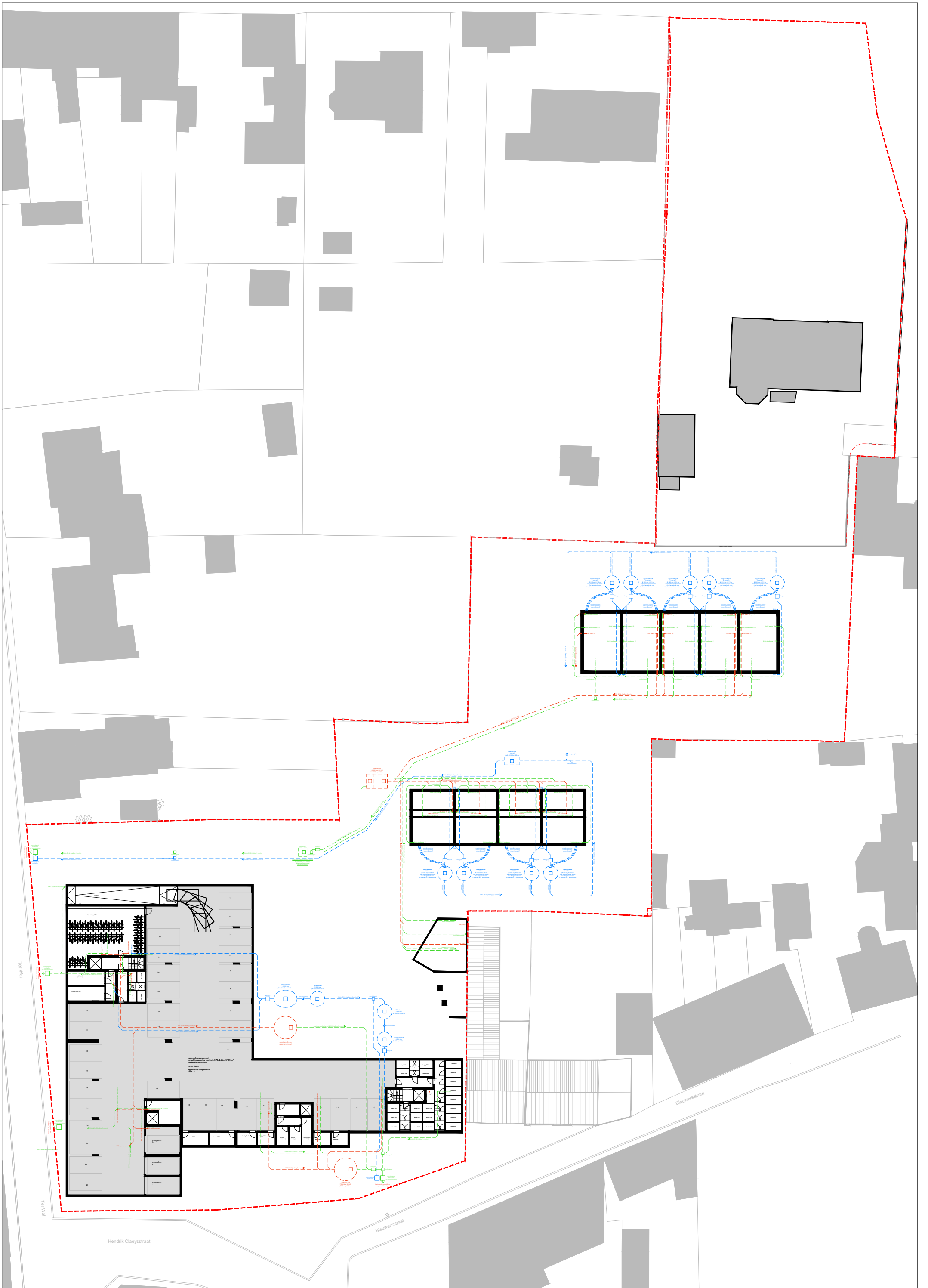
xxxx

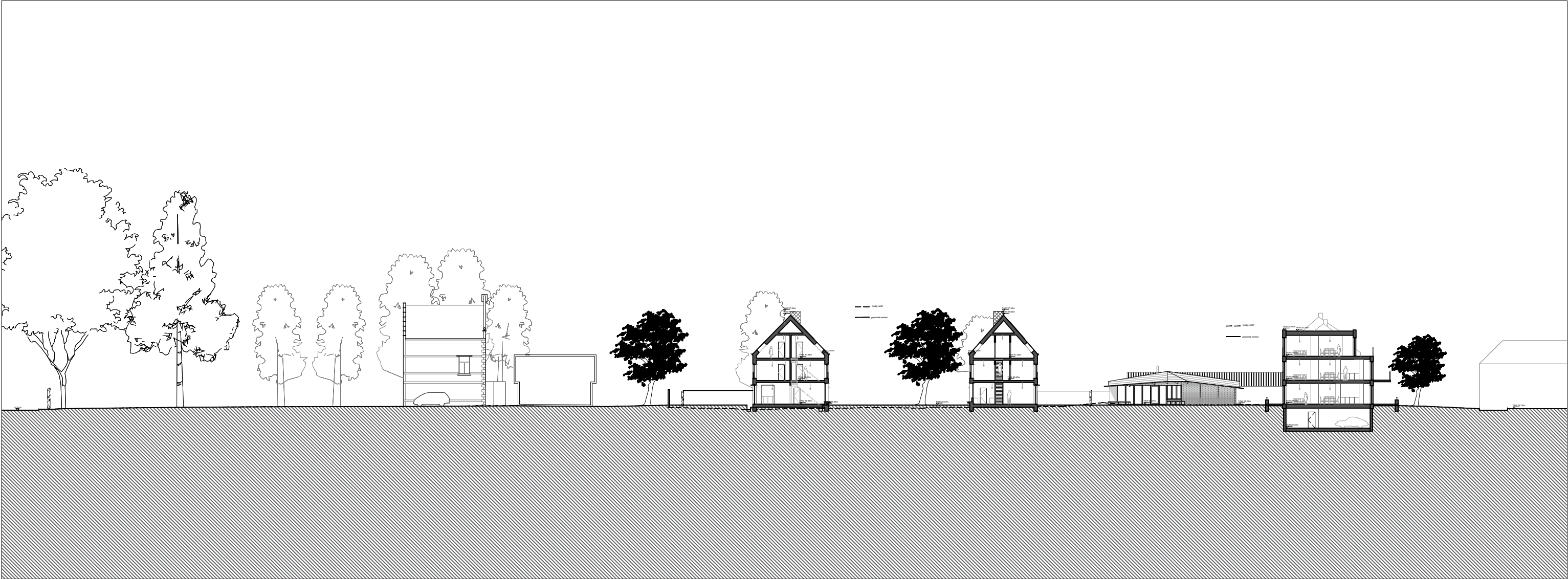




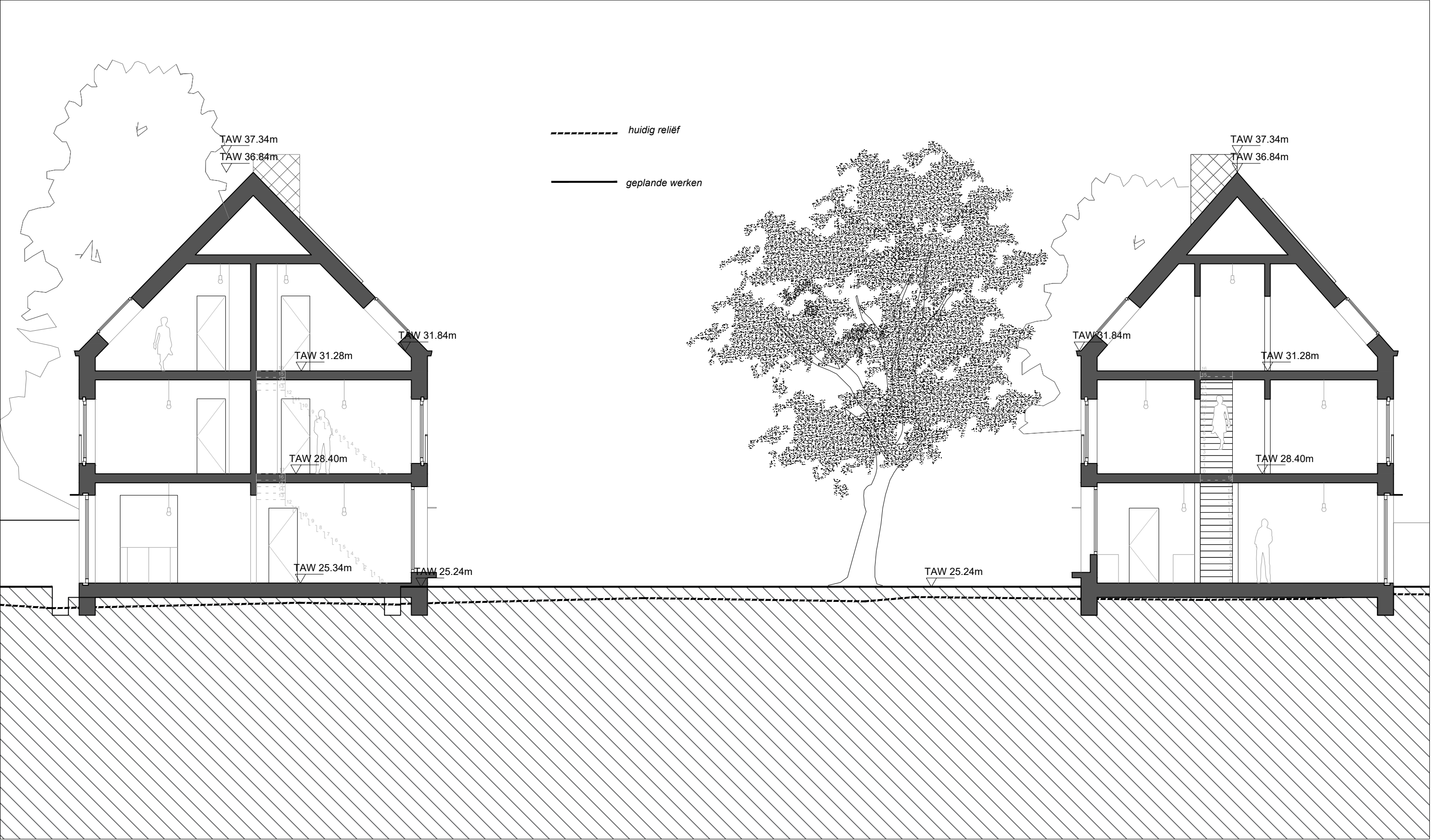


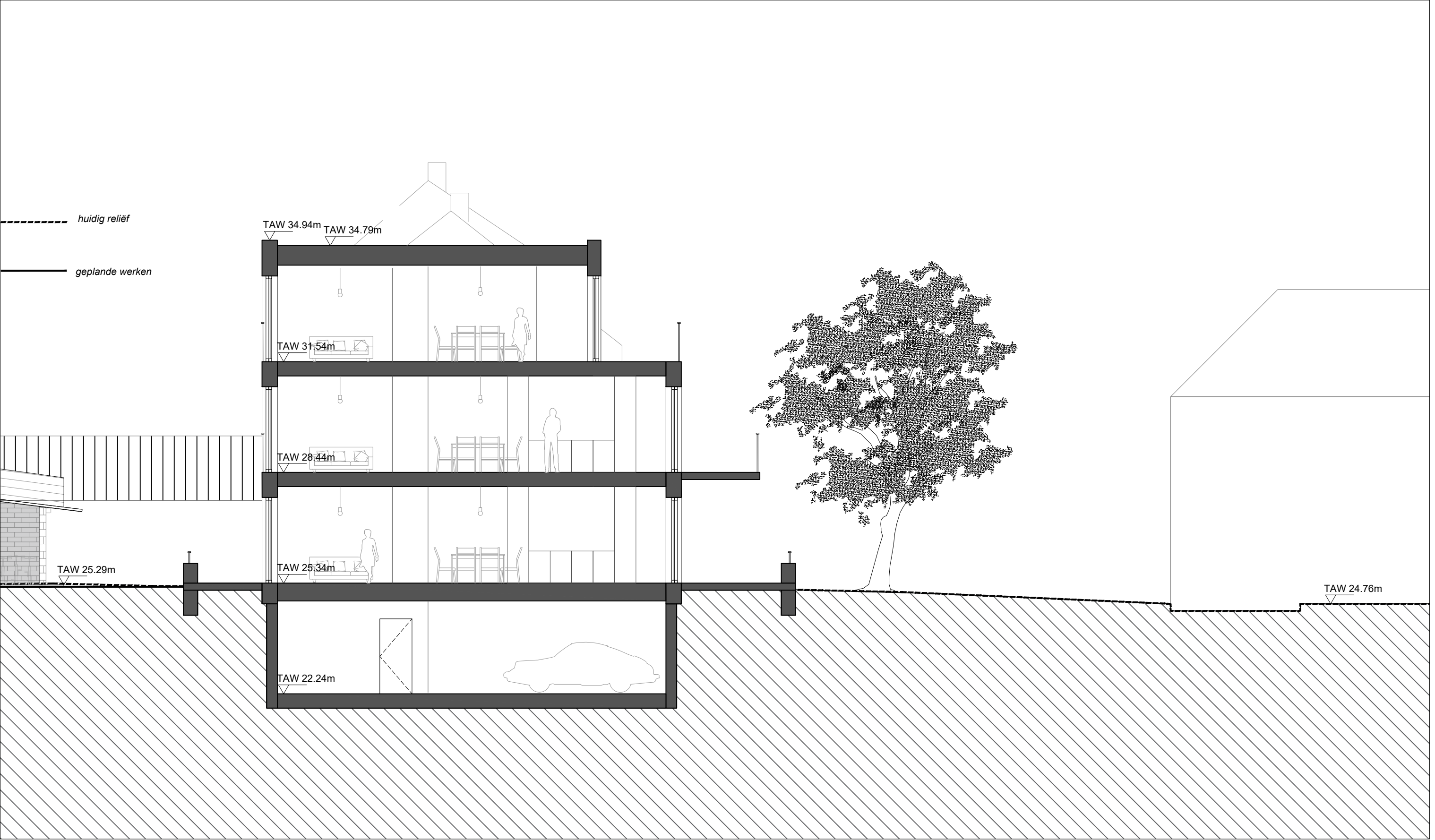


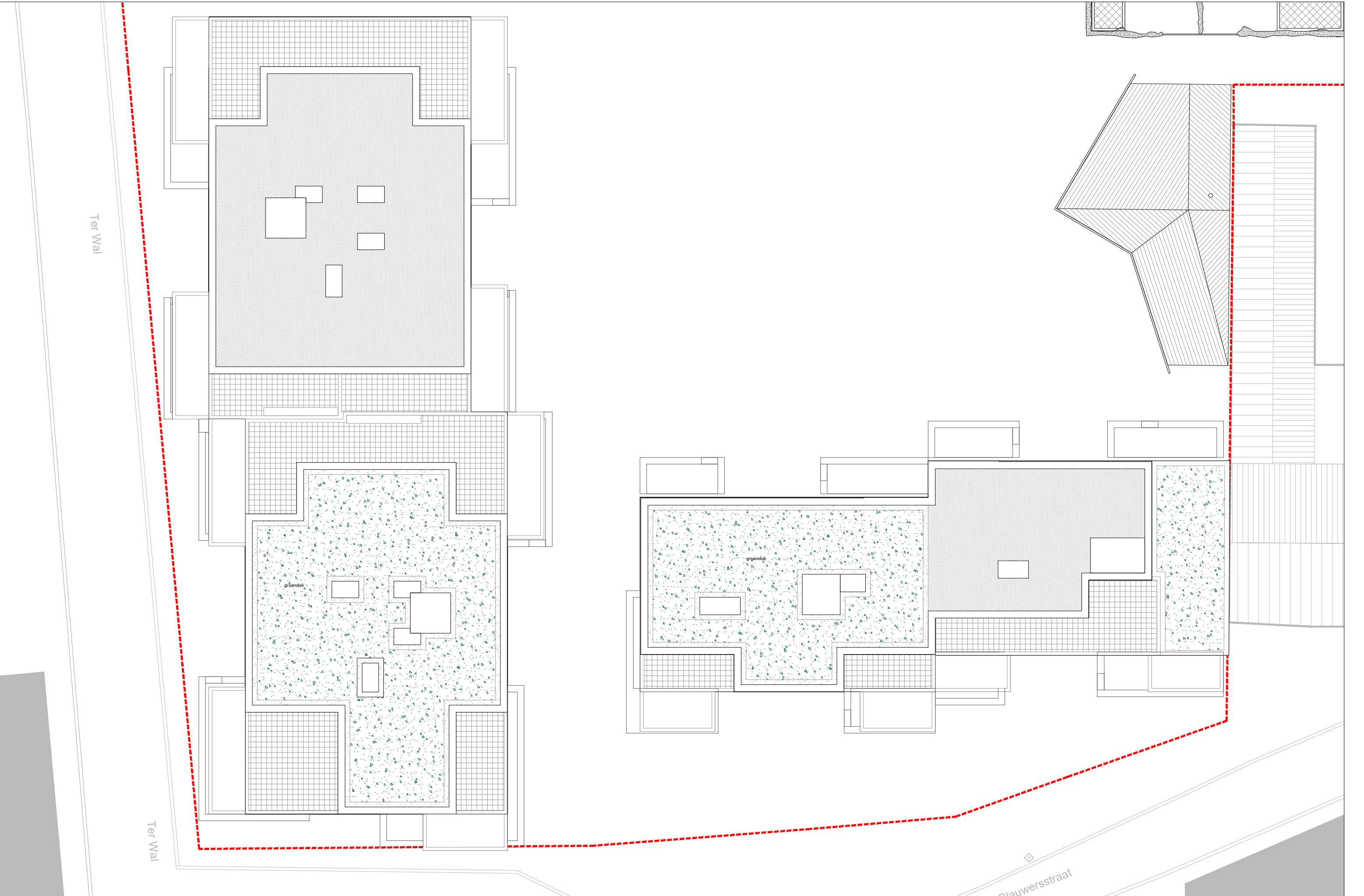










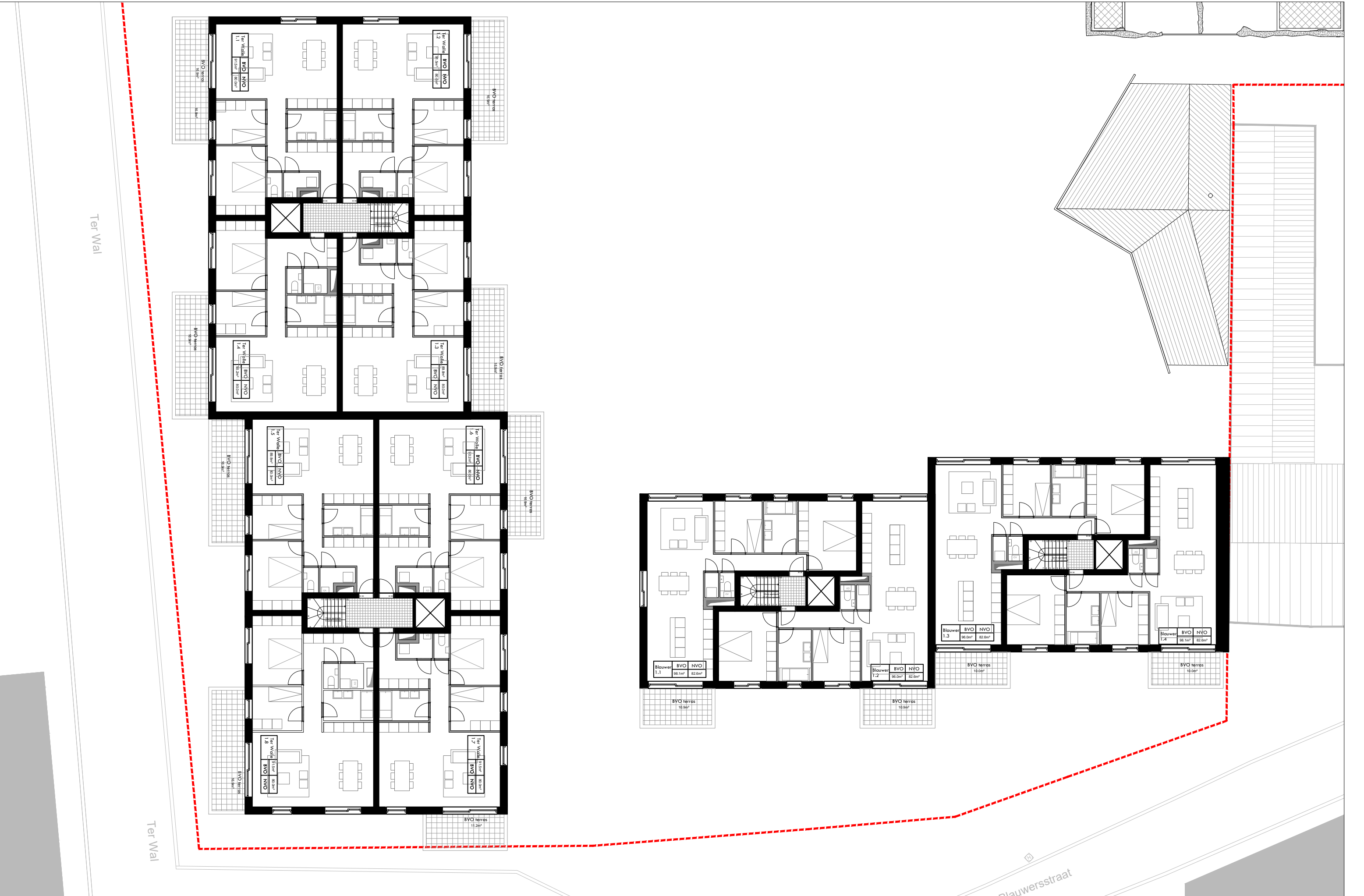


Ter Wal

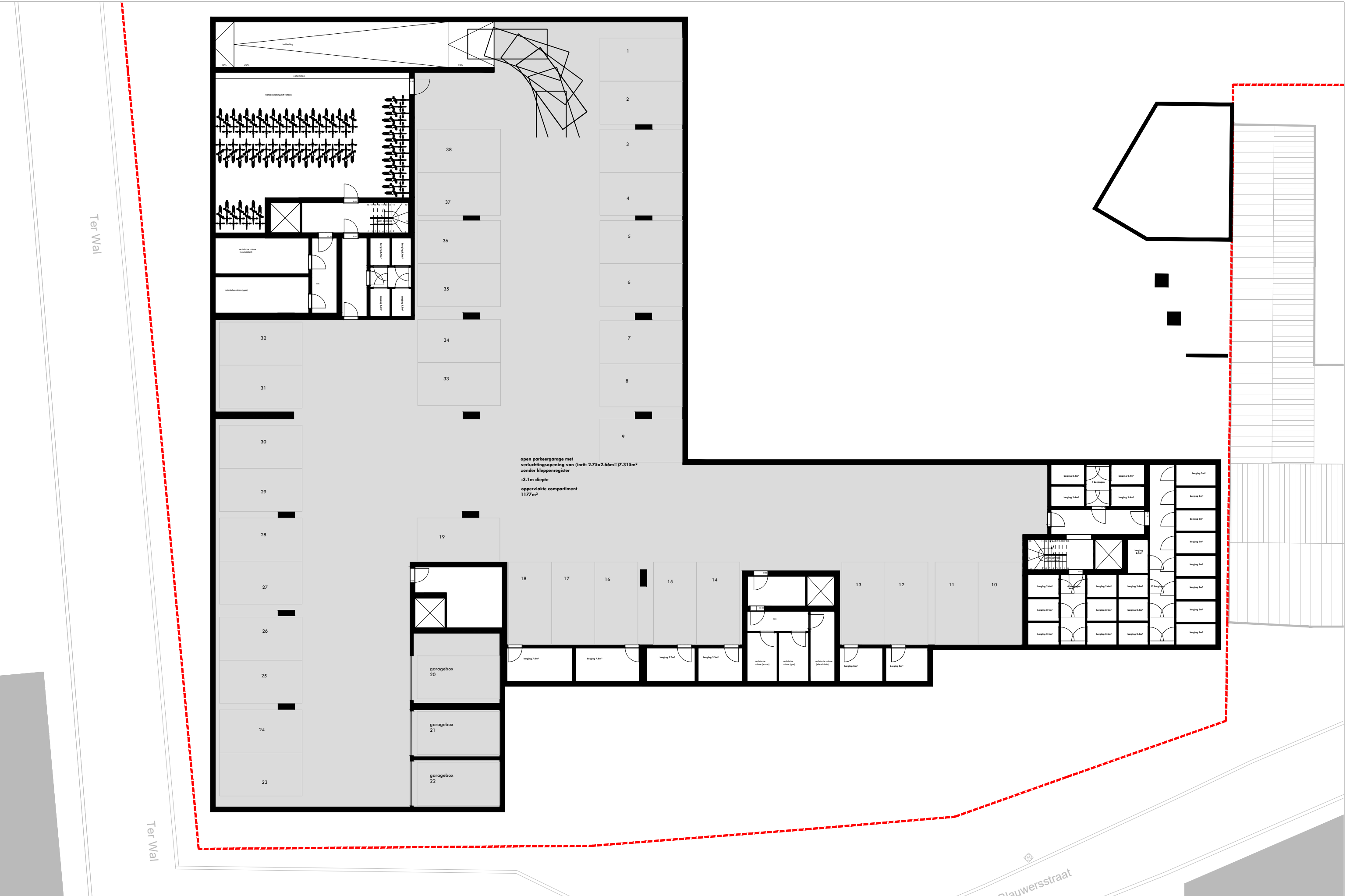
Ter Wal

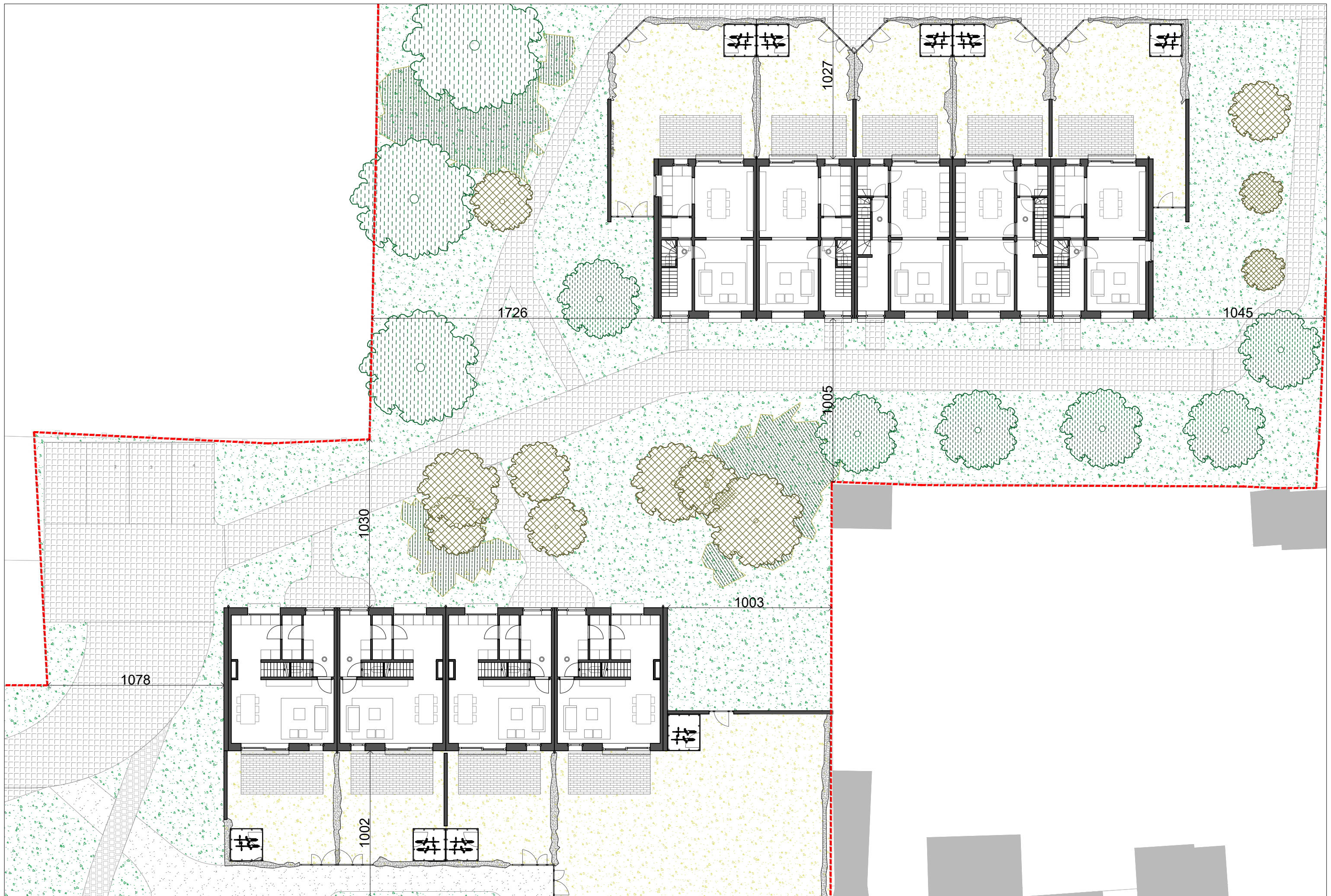
Sifferstraat
Blauwersstraat

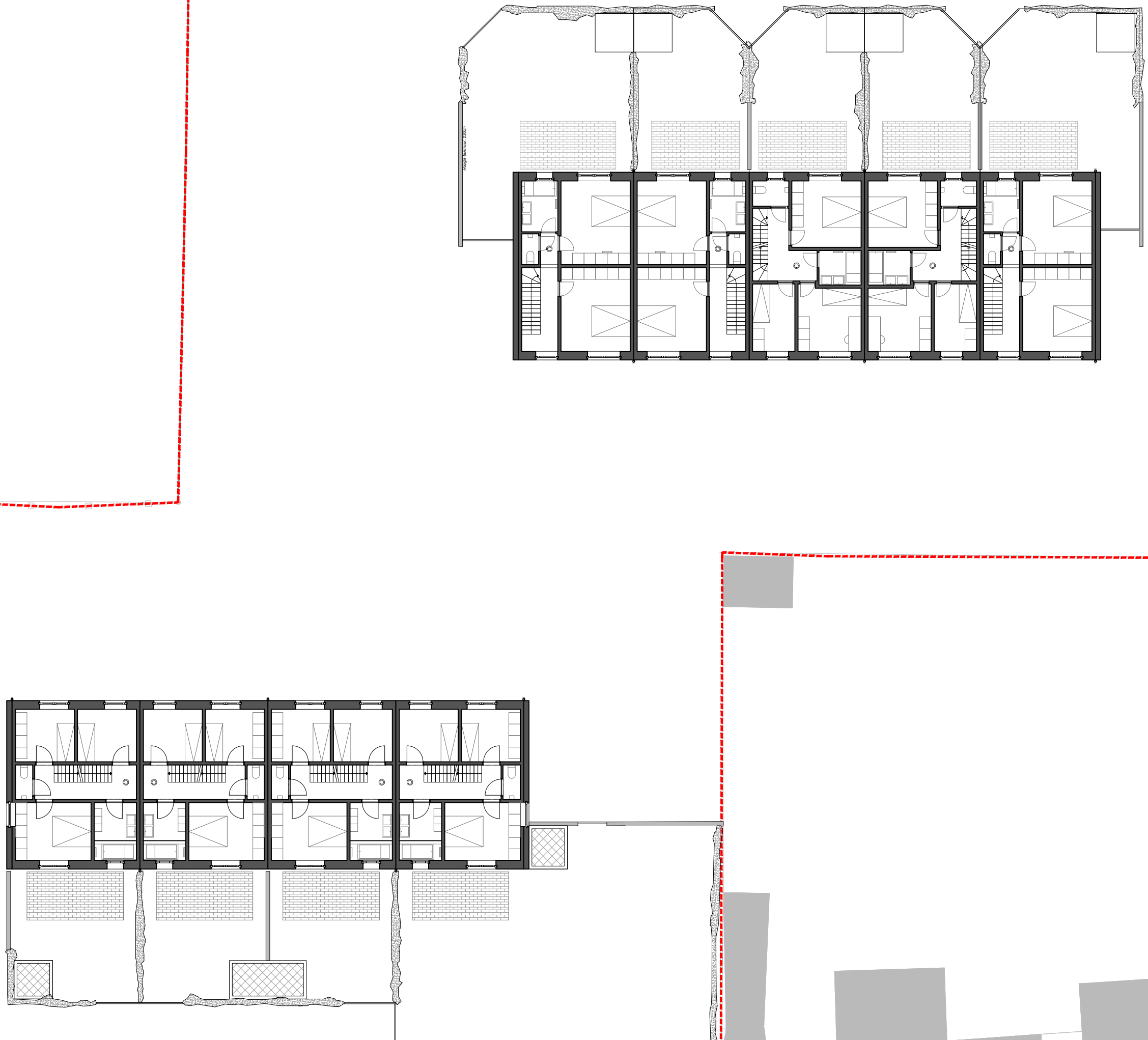


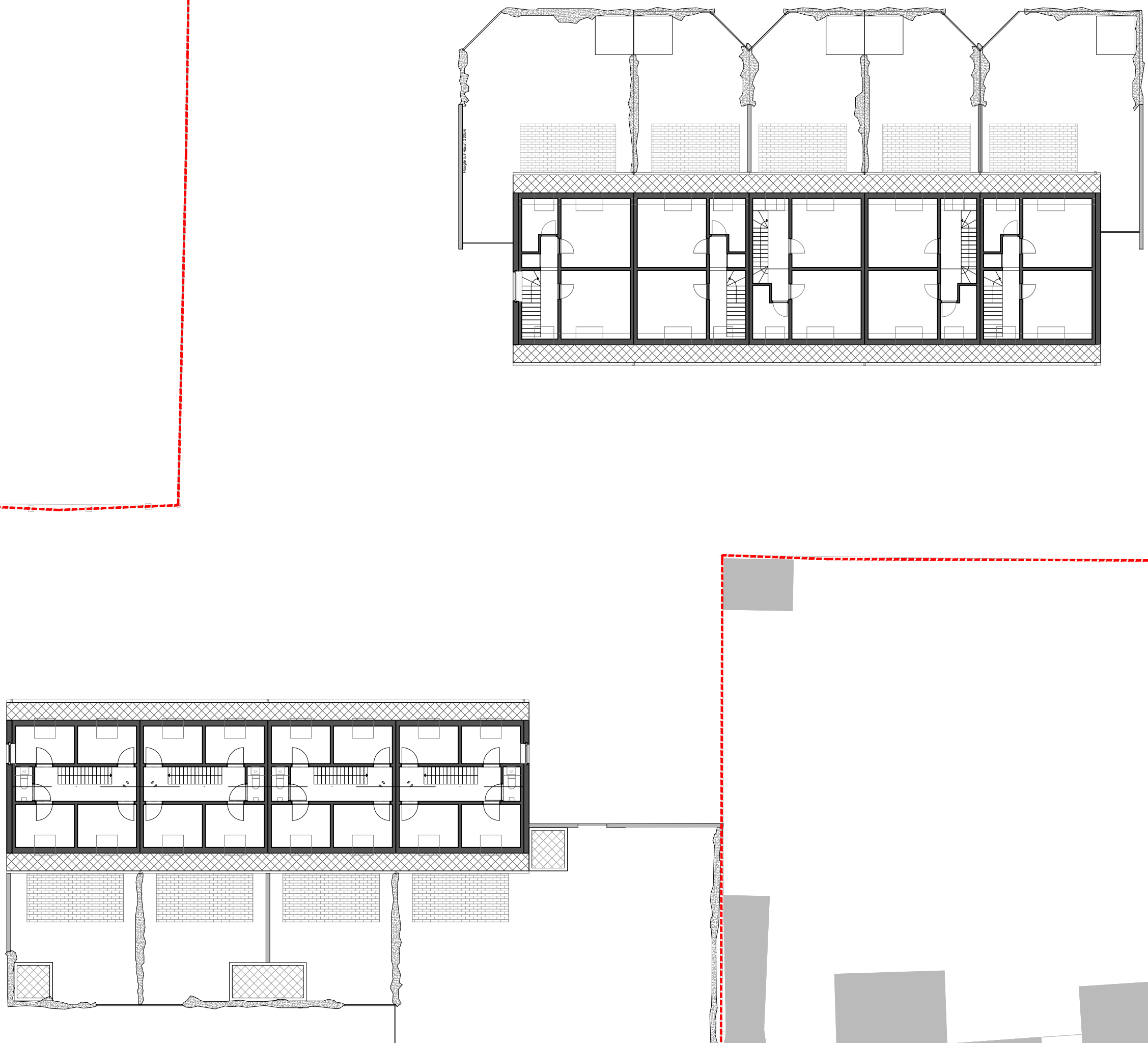


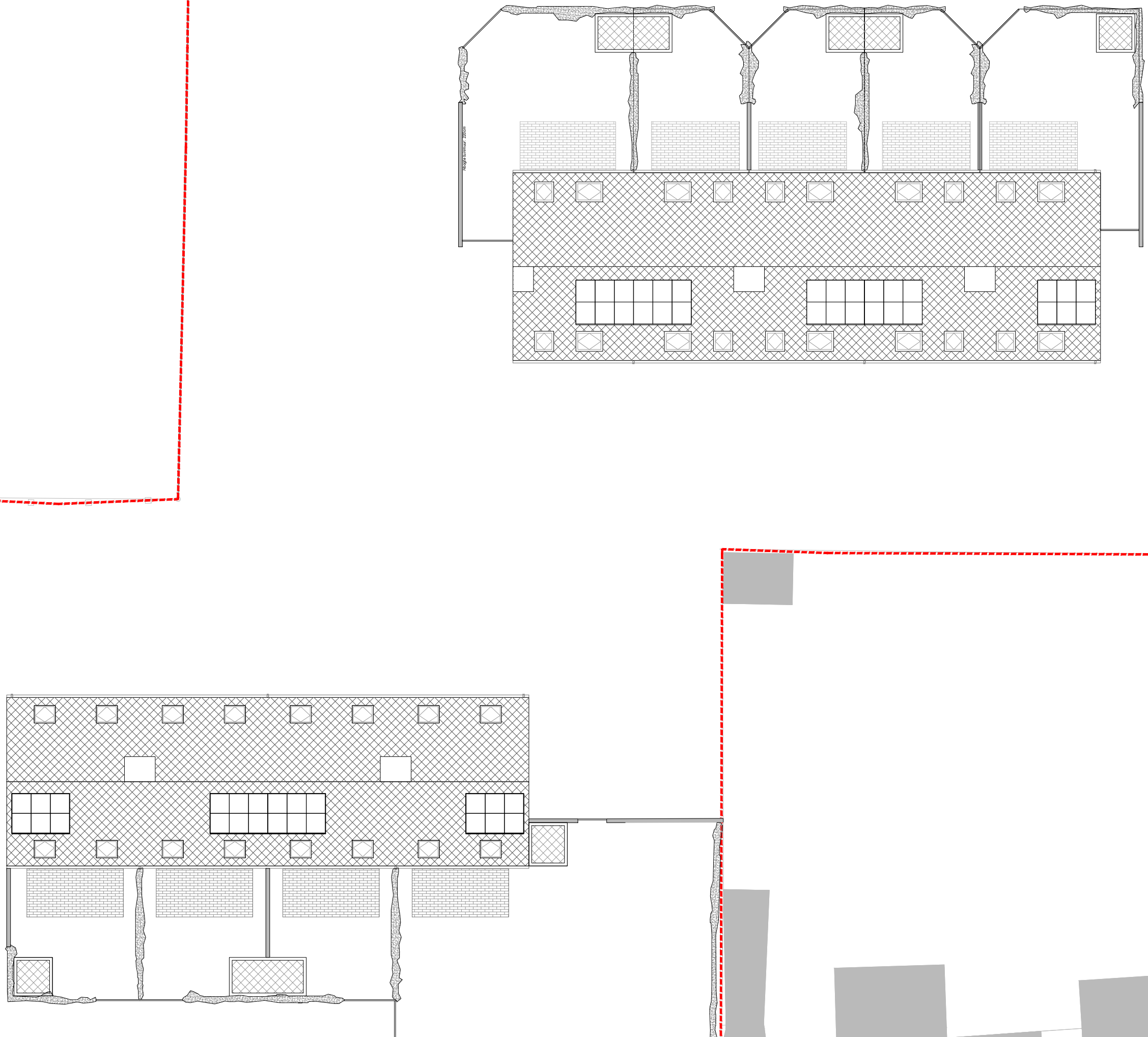








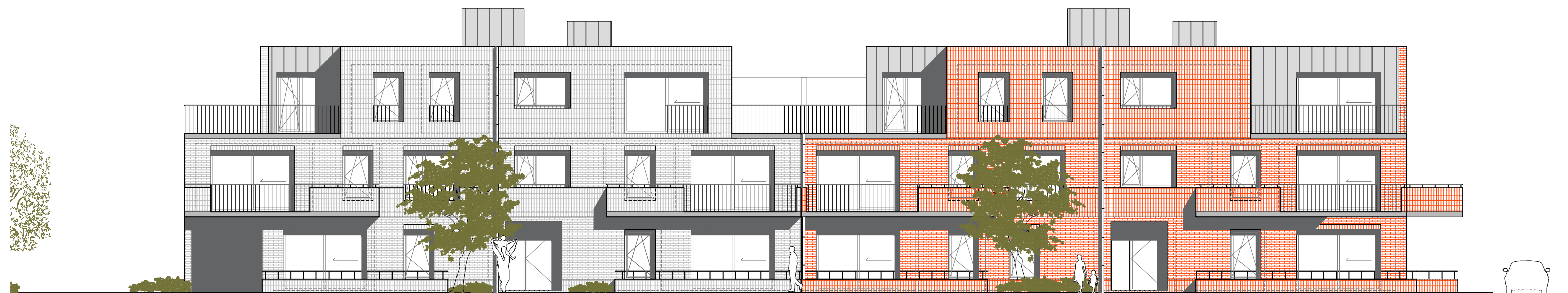








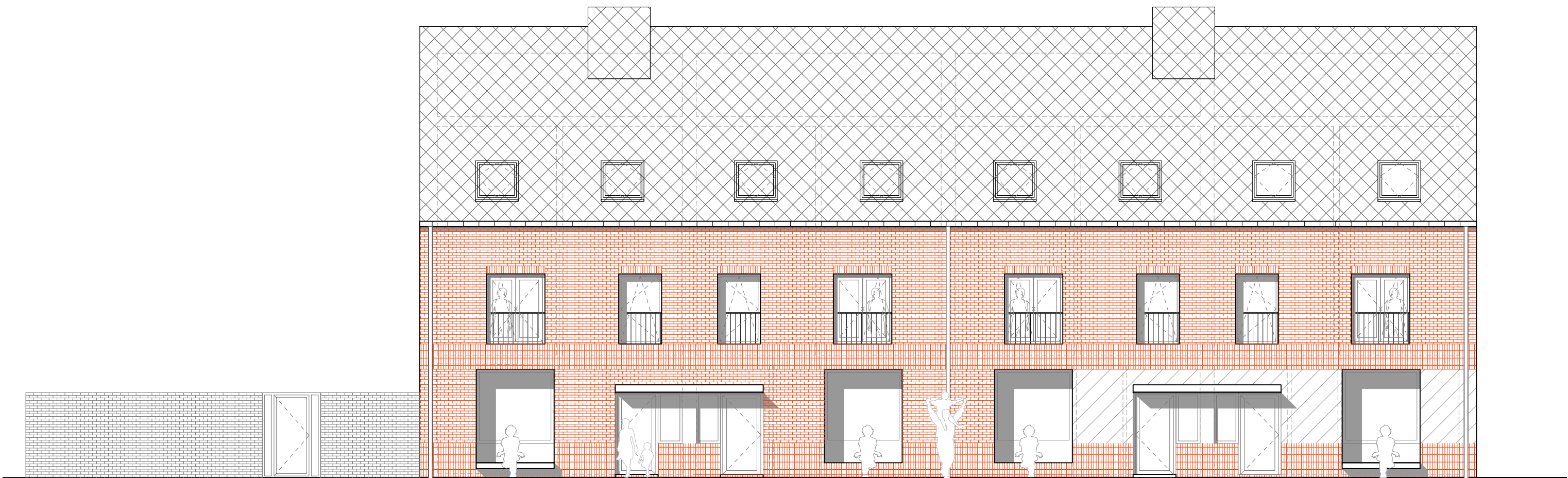


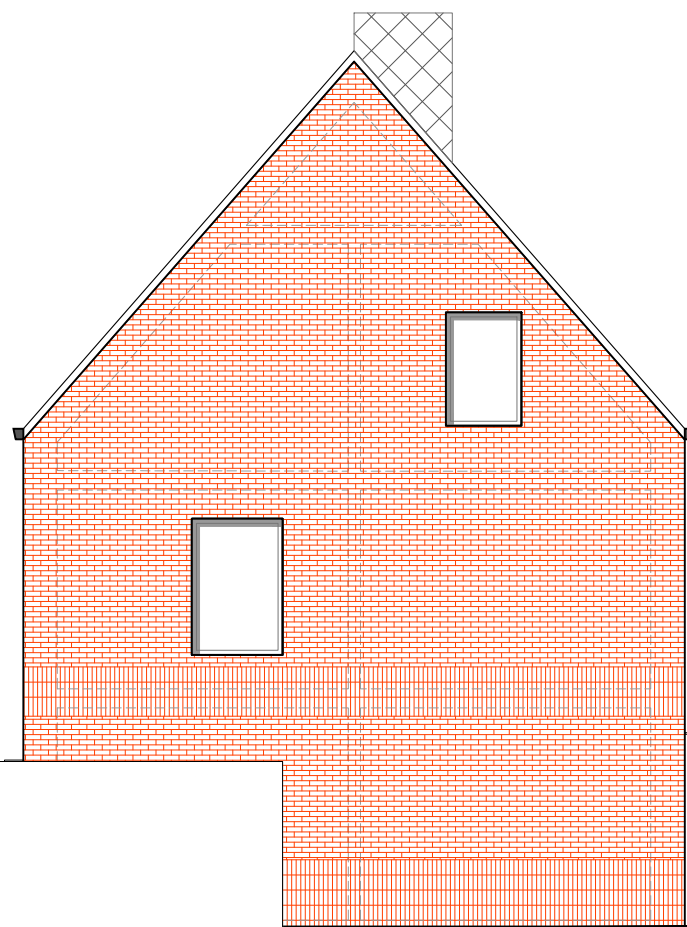




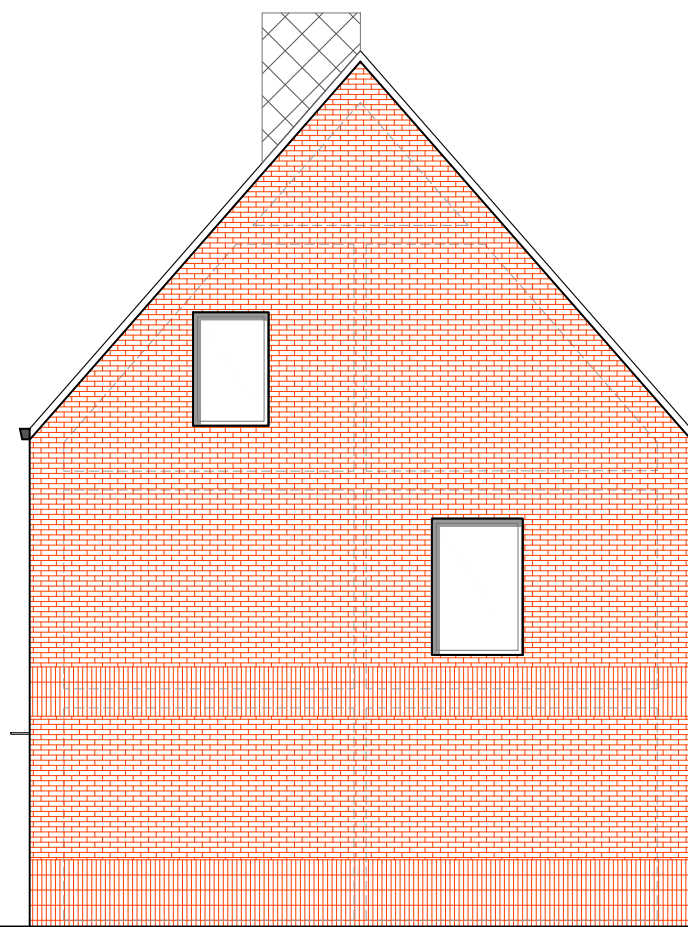








GEVEL Noord-Oost



GEVEL Zuid-West







